

# LIGHT *touch*

Every inch of this redesigned Californian bungalow was considered to improve its functionality and the overall enjoyment for its owners.

STORY *Stephanie Hope* | STYLING *Holly Irvine* | PHOTOGRAPHY *Tom Ferguson*



**EXTERIOR** Bifold doors connect the living area to the backyard, where an outdoor kitchen is tucked away. Exterior painted Dulux Natural White. Natural Accoya timber balustrade and bifolds by NICCO Timber Windows & Doors. Artusi barbecue. **DINING** Joinery finished in House of Bamboo rattan and Polytec 'Woodmatt' in Quartiera Maple, FAF Woodwork & Design. Lost Profile Studio pendant light. Jardan table. Ethnicraft dining chairs.



**LIVING** Walls painted Dulux Natural White throughout. Sika Design 'Charlottenborg' armchair (left), Domo. Nau 'Fat Tulip 88' swivel chair, Cult. Jardan 'Frida' coffee table. Miniforms 'Soda' side table in Petrol Green, Design Nation. *Depicting Transience* artwork by Morgan Stokes, Curatorial+Co. Escea fireplace. Rug, The Rug Establishment. **KITCHEN** "The large island bench becomes a focal point for a drink when friends come over," says owner Andrew. Polytec 'Woodmatt' joinery in Plantation Ash and Quartiera Maple, FAF Woodwork & Design. Zellige glazed splashback tiles in Off White, Bisanna Tiles. Sareva honed quartzite benchtop, Artedomus. Franke 'Mythos' sink and 'Eos Neo' gooseneck swivel tap. Zip 'HydroTap' filtered tap. V-ZUG ovens. Miele cooktop. Oak flooring in Bistre throughout, Tongue & Groove.



"Bringing the house down to ground level has opened up the space completely." RHIANNON, OWNER



**KITCHEN/LIVING/DINING** “The open-plan living area has been life-changing, it’s so conducive to family life,” says Rhiannon, who describes the Lost Profile Studio ‘Covenant’ pendant light over the dining table as “a piece of art”. The area is bathed in natural light that enters via a half-moon skylight and playful peekaboo windows, which maintain privacy from neighbours. Dining joinery finished in House of Bamboo rattan and Polytec ‘Woodmatt’ in Quartiera Maple, FAF Woodwork & Design. Jordan ‘Nook’ sofa, ‘August’ dining table, ‘Pepper’ side table. Ethnicraft ‘Bok’ dining chairs. Custom cushions, Studio Aquilo. Gehry UTS No.1 sculpture by Natalie Rosin (used as a vase), Curatorial+Co. Vases and bowls, The DEA Store.

“It’s always nice when a client says their home feels like a hotel that’s been specifically designed for them,” says Chris Trotta of architecture studio LiteraTrotta. “We know we’ve done our job well when they wake up every day and absolutely love where they live.”

Such is the case for Rhiannon and Andrew, the owners of this reinvigorated Californian bungalow in Sydney’s Eastern Suburbs, who remember the original home as having “lots of small rooms not suited to modern-day living. There was a bulky

staircase in the middle of the living room, and more stairs down to the back garden, making it very difficult to entertain.”

Chris and his co-founding partner Bronwyn Litera rectified these problems with a series of additions and alterations that opened the home to bring in natural light and increase the floor space to accommodate extra bedrooms for the couple’s two children, Archie, four, and Piper, one. In essence, taking it from the ordinary to the extraordinary. “Aside from the functional brief, Andrew and Rhiannon wanted a home that elevated

their lifestyles – a home that makes them feel like every day is a holiday,” says Chris.

Entering from the street, a hallway illuminated by a half-moon skylight leads to a small set of steps that lead to an open-plan living, dining and kitchen area. “Bringing the house down to ground level has opened up the space completely, making the backyard an extension of our living area and so conducive to entertaining,” says Rhiannon.

A combined powder room/laundry at the front of the home doubles as “a bright, feature space for guests,” says Bronwyn. ▶





**ENTRY** James Hardie 'Scyon' cladding in Axon painted Dulux Natural White. Eco Outdoor 'Scala' crazy paving. ADesignStudio 'FlatWhite W2' wall lights. Viridian reeded glass. **ENSUITE** *Top right* Concrete Nation bath. Brodware 'City Plus' spout in Roma Bronze. Unique Travertine tiles in White Minimal Naturale, Di Lorenzo. 'Senufo' stool, Orient House. **POWDER ROOM** *Bottom left* Mirror and brass shelf, FAF Woodwork & Design. 'Cottage' tiles in Sand, Di Lorenzo. Concrete Nation basin. Brodware tapware. **MAIN BEDROOM** *Below and opposite* Wall lights and lamp, Lighting Collective. Sika Design 'Fox' lounge chair, Domo. Wendelbo 'Mate' side table and 'Casey' chair, Trit House. GlobeWest 'Hugo Ridge' bedhead. Cultiver bed linen in Sand. *A Small Painting Concerning Time* by Morgan Stokes, Curatorial+Co. Cushion, Montmartre Store. **CHILD'S BEDROOM** Polytec joinery in Nouveau Grey. In The Sac coverlet. Side table, Montmartre Store. *Stacks On* sculpture by Alichia van Rhijn, and *Lilac Habitat II* sculpture by Natalie Rosin, both Curatorial+Co. Curtains, Homelife Furnishings. Bremworth 'Samurai' carpet in Pyua.



**THIS IS THE LIFE**  
 On weekends, the family start their day at nearby Bronte Beach before heading home for a relaxed lunch on the deck. "We love to cook and we can watch the kids in the garden or living room while we do that," says Andrew. "Our bedrooms are generous in size and just feel so peaceful – perfect for an afternoon nap if we can squeeze one in!" ▶



“It’s a functional and practical utility space for the everyday.” Upstairs, the family’s three bedrooms are within earshot of each other, and the children have a shared bathroom. Meanwhile, Rhiannon and Andrew enjoy water-view glimpses from their treetop master bedroom, which is replete with comforting finishes.

To instil a sense of calm and retreat throughout the home, Chris and Bronwyn selected a warm and uplifting palette. “Soft oak timber floors give the whole home a warm glow, while we kept the walls and ceilings clean and white to accentuate the size of the rooms and the

light coming into them,” says Bronwyn. She describes the timber-framed windows and doors as “lovely golden jewels” set against the white walls, while timber kitchen joinery in a mix of tones is offset by eye-catching brass trims. But the standout feature, says Bronwyn, are the “incredible stone benchtops and vanities, a spiders-web of glittering quartzite”.

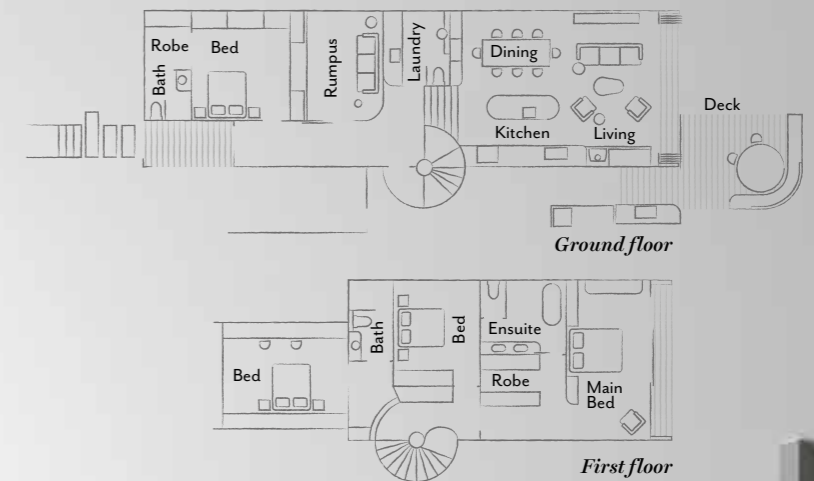
Curved lines and edges in the kitchen island, furniture and lighting allow a sense of natural flow between spaces, and soften the home’s angular external form. Dual-function joinery works as a practical solution for the young family while

surprise elements, such as the concealed whisky cupboard in the dining room, snuggle nooks in the children’s rooms and a window between the main bedroom and ensuite, make it uniquely theirs.

“For the first few weeks after we moved in, it felt very surreal, to be honest,” says Rhiannon. “We couldn’t believe it was ours! Now it feels like home and we’re so happy with it.”

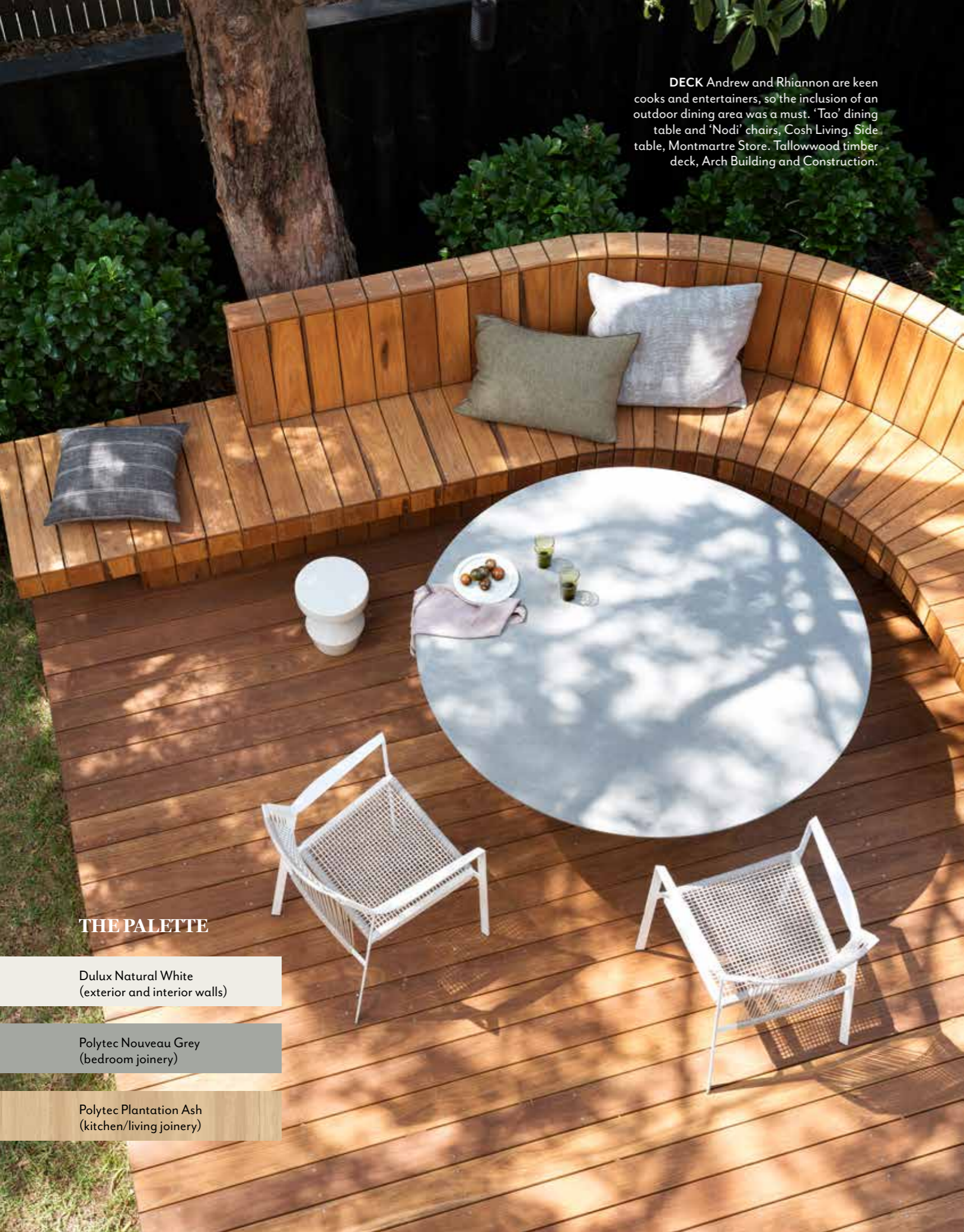
► *LiteraTrotta Architecture, Rushcutters Bay, NSW; literatrotta.com. Arch Building and Construction, NSW; archbuilding.com.au. Studio Aquilo, Crows Nest, NSW; studioaquilo.com.au.*

**THE LAYOUT**



**BEDROOM** Joinery, linen, side table, chair, curtains and carpet, as before. *Stacks On* and *Roadside Freesias* by Alichia van Rhijn, and *Lilac Habitat II* by Natalie Rosin, all Curatorial+Co. Accoya timber window with Viridian reeded glass, NICCO Timber Windows & Doors.

**DECK** Andrew and Rhiannon are keen cooks and entertainers, so the inclusion of an outdoor dining area was a must. 'Tao' dining table and 'Nodi' chairs, Cosh Living. Side table, Montmartre Store. Tallowwood timber deck, Arch Building and Construction.



**THE PALETTE**

Dulux Natural White  
(exterior and interior walls)

Polytec Nouveau Grey  
(bedroom joinery)

Polytec Plantation Ash  
(kitchen/living joinery)



1

**THE SOURCE**

*Create a sense of softness and space in your home by collecting pieces with curved lines and a pop of powder blue.*



Produced by Andrea Healy. Paint colours are reproduced as accurately as printing processes allow.

1 Heller 'Max' stackable mugs, \$275/six, Living Edge. 2 'Caspian' floor rug (290x200cm), \$1199, Freedom. 3 Two-tone silicone Putty & Pond artwork by Manon Steyaert, \$4600, Jardin. 4 Guzzini 'Tiffany' bowl in Terracotta (25cm), \$45.95, Kitchen Warehouse. 5 'Tig' side table in Raw/Oak, \$1804, Jardin. 6 Maison Balzac martini glasses in Clear/Opaque Olive (175ml), \$69 each, David Jones. 7 Arne Jacobsen martini mixer, \$360, Citta. 8 Sika Design 'Michelangelo' day bed, \$995, Domo. 9 'Soren' floor lamp in Travertine, \$579, Norsu Interiors. 10 'Almos Chubby' bedhead in Sky Blue Boucle, \$1433, GlobeWest. H&G